

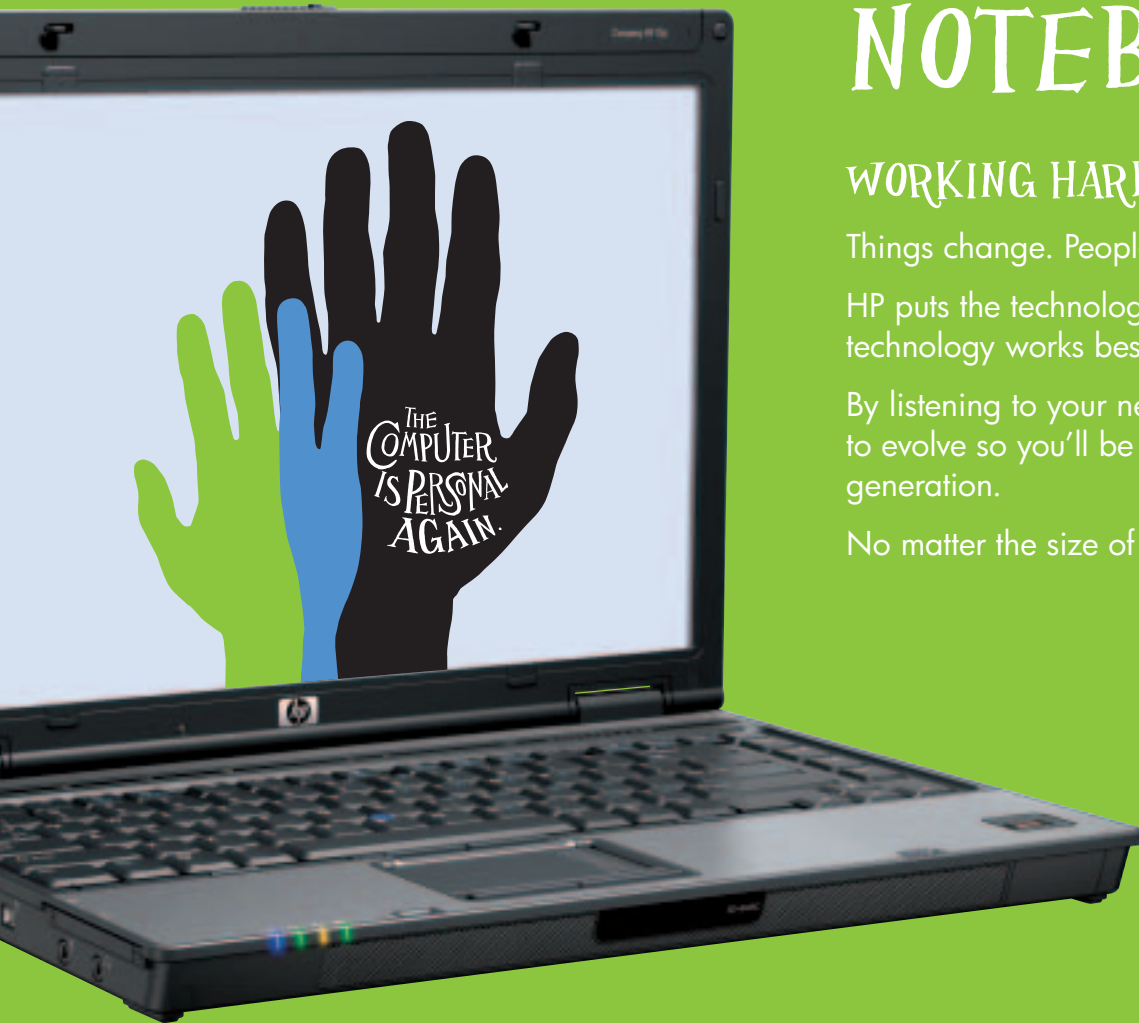
HP Compaq Notebook Family

Version 2 2007

THE
COMPUTER
IS PERSONAL
AGAIN.

GOING
PLACES
FAST.





NOTEBOOK EVOLUTION

WORKING HARD, WORKING SMART... JUST LIKE YOU.

Things change. People change. Businesses change.

HP puts the technology in place to support whatever challenges you face. That technology works best when it works simply and in tune with your growing needs.

By listening to your needs, our hardware and HP Professional Innovations are designed to evolve so you'll be assured of an always-better experience with each new notebook generation.

No matter the size of your business or what it does.

- ✓ For the SMB market, HP delivers hardware and services that ensure you spend less time on IT and more on what matters most – your business.
- ✓ For the Corporate and Enterprise market, HP provides a trusted environment based on manageable, reliable, secure and easy-to-use products that you can always depend on.

REAL SOLUTIONS FOR REAL BUSINESS PEOPLE.

HP PROFESSIONAL INNOVATIONS...

... PART OF YOUR NOTEBOOK DNA

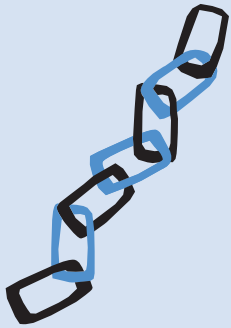
You're unique. So is the way you do business. Just like the strands of DNA that make you who you are, HP Professional Innovations are the genetic codes that set us apart. These intuitive technologies are the foundation of our notebook family, adapting perfectly to your needs.



SECURITY

Flexible security solutions for a trusted environment.

- ✓ Protecting assets and data
- ✓ Preventing unauthorised access
- ✓ Preventing illegal and unwanted software
- ✓ Preventing viruses
- ✓ Deploying patches
- ✓ Addressing legislative concerns



RELIABILITY

Designed to ensure high product quality and durability. Get mobility you can truly count on.

- ✓ HP Total Test Process
- ✓ Hard Drive Protection
- ✓ HP Durable Materials
- ✓ HP Backup and Recovery



EASE OF USE

Increase productivity and lower IT support costs with solutions which are easy to use, deploy and manage.

- ✓ Easy on power
- ✓ Easy wireless connections
- ✓ Easy input
- ✓ Easy to share work
- ✓ Easy to deploy and manage

SECURITY

BUILT TO PROTECT



Drive Encryption for HP ProtectTools:
Encodes all the information on your hard drive to make it unreadable to unauthorised users.

Credential Manager for HP ProtectTools:
Allows easy enforcement of sound security policy while providing simple access.

HP Privacy Filter:
Limits unwelcome "from the side" viewing of display content.

HP Smart Card Reader:
Additional security layer as well as passwords to log on your computer.



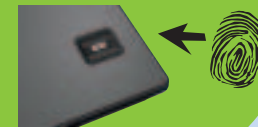
Kensington Lock Slot:
Enables you to lock your notebook to the HP Docking Station or your table with a cable.



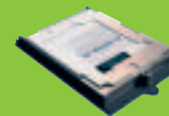
TPM 1.2 Embedded Security Chip:
This little chip is like an electronic security guard for your most sensitive data.



HP Fingerprint Sensor:
Removes the headache of remembering or changing passwords regularly.



HP Disk Sanitizer:
This software safely erases data – permanently.



WHAT DO YOU STORE ON YOUR NOTEBOOK?

- ✓ Banking information?
- ✓ Financial information?
- ✓ Contacts?
- ✓ Business data?
- ✓ Confidential documents and e-mails?

IMAGINE IF THIS FELL INTO THE WRONG HANDS...

Protect your critical data with enhanced security. HP ProtectTools is a one-stop security control centre that lets you confidently get on with what really matters – your business!

EASE OF USE



BUILT TO SIMPLIFY

We want to help boost your productivity while maximising simplicity. This is a snapshot of the features we've developed for you:

- ✓ **Easy on power** with Ambient Light Sensor and HP Fast Charge
- ✓ **Easy to input** with Illumi-Lite Displays, touch-sensitive controls and HP QuickLook
- ✓ **Easy to deploy and manage** with HP Lifecycle Management, common image capabilities and Global Series support
- ✓ **Easy wireless connections** with HP 3G Broadband Wireless* and the HP Wireless Assistant
- ✓ **Easy to share work** through HMI & Dual Link DVI support, ultra-wide viewing, LightScribe and HP Universal Accessories

ALL DAY COMPUTING



More than 15 hours**
(with Ultra-Capacity Battery)

Up to 11 hours**
(with Extended Life Battery)

Up to 6 hours**
(with primary battery)

HP Fast Charge Technology

Recharges to 90% within 90 minutes to get you up and running faster.



POWER WHEN AND WHERE YOU NEED IT

Each notebook comes with its own unique set of HP Professional Innovations.

* Wireless use requires separately purchased service contract. Not all providers are supported and access might be limited to coverage area of service provider. Check with HP representative or service provider for details.

** Select models only

RELIABILITY

BUILT TO LAST

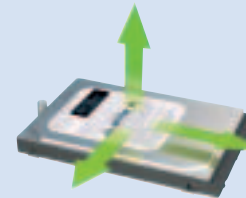
When you make an investment, you want it to last.

"WE FOCUS ON A HIGH LEVEL OF ACHIEVEMENT AND CONTRIBUTION. OUR CUSTOMERS EXPECT HP PRODUCTS AND SERVICES TO BE OF THE HIGHEST QUALITY AND TO PROVIDE LASTING VALUE."

Bill Hewlett, Founder

HP industry-leading notebooks and accessories undergo over 95,000 hours of validation to ensure the highest standards in design, materials and components, including:

- ✓ Hard drive protection
- ✓ HP durable materials
- ✓ Backup and recovery solutions



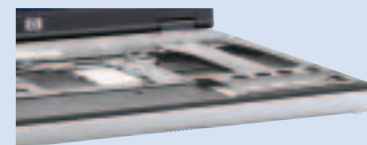
ACCIDENTS HAPPEN

HP 3D DriveGuard* protects the hard disk against impact.



LONG-LASTING FINISH

With scratch-resistant **HP DuraFinish**.



MADE TO LAST, MADE TO CARRY

Magnesium alloy frame and display enclosure* creates strong but lightweight notebooks.



IT'S IN THE GENES

Notebooks are no longer just about mobility. Today they're used in a variety of ways for as many different reasons.

Comprising four individual series, HP notebooks come with their own unique HP Professional Innovations and flexible features that can also be included between each series.

Now you can be sure of getting the features you need without paying for more...

S

FEATURE PACKAGE

"I need a solution with **all the business essentials** that's also **cost-effective**"

B

FEATURE PACKAGE

"I'm looking for a perfectly **secure notebook** with **additional connectivity and expandability**"

W

FEATURE PACKAGE

"We need **workstation-quality performance** which is ISV certified and that we can take with us. **Mobility and power** are essential"

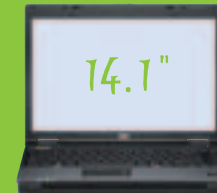
P

FEATURE PACKAGE

"Our company is looking for **truly manageable** and **fully durable** products for uncompromising **productivity**"

GET THE
NOTEBOOK
THAT'S
BEST FOR
YOU

CHOOSE FROM THE FULL RANGE



| | 6715s Financially smart | 6720s Business essential | 6820s Dream big | 6510b Business traveller | 6710b Tailored for business | 6715b Ideal productivity and enhanced security |
|-----------|---|-----------------------------|--------------------|---|--------------------------------|---|
| PROCESSOR | Choice of Intel® (Core™2 Duo and Celeron®) or AMD (Turion™ and Sempron™) Processors | | | Choice of Intel® (Core™2 Duo and Celeron®) or AMD (Turion™ and Sempron™) Processors | | |
| GRAPHICS | Choice of Intel integrated or ATI discrete graphics | | | Choice of Intel integrated or ATI discrete graphics | | |
| WEIGHT | Starting at 2.5 kg – 3 kg | | | Starting at 2.4 kg – 2.6 kg | | |
| BATTERY | From 3 hours to 11h 15m | | | From 4h 30m to 14h 30m | | |
| | BALANCED MOBILITY | | | BALANCED MOBILITY | | |

OF HP NOTEBOOKS



| | | | | |
|---------------------------------------|---|---------------------------------|--|---|
| 2510p Lighten your workload | 2710p Productivity with a twist | 6910p Corporate elite | 8510p Power plus portability | 8710p Feel the power – enjoy the view |
|---------------------------------------|---|---------------------------------|--|---|

| | |
|-------------------------------------|----------------------------------|
| 8510w Portable powerhouse | 8710w Power to perform |
|-------------------------------------|----------------------------------|

Choice of Intel® Core™2 Duo or Intel®Core™2 Duo ULV Processors

Intel® Core™2 Duo Processors

Choice of Intel integrated or ATI discrete graphics

Choice of NVIDIA or ATI discrete graphics

Starting at 1.3 kg–3.4 kg

Starting at 2.8 kg–3.4 kg

From 4 hours to 15h 15m

From 4 hours to 11h 45m

ULTRA-LIGHT

BALANCED MOBILITY

PERFORMANCE

PERFORMANCE

The *S FEATURE PACKAGE* is the perfect solution when you need the latest technologies with all the essential features to keep your business moving forward.



SECURITY...
... with HP DriveLock

Drivelock technology helps protect your hard drive from unauthorised access. Even if your hard drive is removed data access is prevented.



EASE OF USE...
... with LightScribe technology

Integrated into your DVD drive for burning laser-etched custom labels directly on your disks.

RELIABILITY...
... with HP DriveGuard

Helps reduce shock to the hard drive – and therefore the risk of data corruption or loss – by mounting the drive directly to the notebook frame.

**SAVINGS THAT
ARE ENCODED**

HP recommends Windows Vista® Business.



FINANCIALLY SMART

HP Compaq 6715s

Evolve beyond the basics. The HP Compaq 6715s Notebook PC is the perfect choice for professionals looking for in-built value and connectivity.

NEW ✓ 15.4" widescreen display



- Primary battery life 3h 40m
- + HP Extended Life Battery 7h 45m
- + HP Ultra-Capacity Battery 11h 15m

The *S FEATURE PACKAGE* is the perfect solution when you need the latest technologies with all the essential features to keep your business moving forward.



SECURITY...
... with Disk Sanitizer

Dispose of secure data easily and cost-effectively – no damage to your hard drive, no extra software needed.



EASE OF USE...
... with LightScribe technology

Integrated into your DVD drive for burning laser-etched custom labels directly on your disks.

RELIABILITY...
... with HP Total Test Programme

HP business notebooks undergo more than 95,000 hours of testing to ensure they can stand up to the most rigorous work environments.

**STYLISH
ESSENTIALS**

HP recommends Windows Vista® Business.



BUSINESS ESSENTIAL

HP Compaq 6720s

Go further. The HP Compaq 6720s packs all your essentials and the latest technology into a slim new design that takes you from the office, to meetings, to the road.

NEW ✓ sleek silver design

✓ 15.4" widescreen display



Primary battery life 4h 30m



DREAM BIG

HP Compaq 6820s

See the difference. The HP Compaq 6820s features enhanced graphics and a large 17" widescreen inside a sleek new body. Who knew affordable and reliable could look this good?

NEW ✓ sleek silver design

NEW ✓ 17" widescreen display



Primary battery life 3 hours

The **B FEATURE PACKAGE** provides the resourceful features and enhanced security you need to keep your business flexible.

SECURITY...

... with Drive Encryption from HP ProtectTools

Effectively protects the data stored on the hard drive without user intervention.

EASE OF USE...

... with HP Universal Accessories

Accessories that are universally shared across the entire HP Business Notebook line and are common to most commercial notebooks.



RELIABILITY...

... with HP 3D DriveGuard

Automatically protects data by parking the hard drive prior to a shock event, bump or drop.



**MORE SECURE,
AND CONNECTED**

BUSINESS TRAVELLER

HP Compaq 6510b

A unique travel companion. Featuring HP 3G Broadband Wireless* within a thin, lightweight design it means you can enjoy the freedom and flexibility to work, how and where you want.

NEW ✓ 14.1" widescreen display



| | |
|-----------------------------|---------|
| Primary battery life | 5h 15m |
| + HP Extended Life Battery | 10h 45m |
| + HP Ultra-Capacity Battery | 14h 30m |

* Wireless use requires separately purchased service contract. Not all providers are supported and access might be limited to coverage area of service provider. Check with HP representative or service provider for details.



TAILORED FOR BUSINESS

HP Compaq 6710b

Check out the view. With an impressive widescreen display you can do just that. Then add all the features you could need, with enhanced security and wireless connectivity, and you can truly keep your office mobile.

NEW ✓ 15.4" widescreen display



| | |
|-----------------------------|---------|
| Primary battery life | 5h 15m |
| + HP Extended Life Battery | 10h 45m |
| + HP Ultra-Capacity Battery | 14h 30m |



IDEAL PRODUCTIVITY AND ENHANCED SECURITY

HP Compaq 6715b

Be different. Select the display that best suits your needs, WXGA or WSXGA+ with anti-glare. Combined with a host of security and connectivity features, now you can keep moving without missing a thing.

NEW ✓ 15.4" widescreen display



| | |
|-----------------------------|----------|
| Primary battery life | 4h 30m |
| + HP Extended Life Battery | 8h 30m |
| + HP Ultra-Capacity Battery | 12 hours |

The **P FEATURE PACKAGE** provides even more innovative features to those included in the Business package for a more durable, fully loaded notebook PC.

SECURITY...

... with HP Integrated Security Solution

Protect your notebook, data and your network with this portfolio of security technologies and features that you can plug directly into your hardware, firmware and software.

EASE OF USE...

... with manageability

Intel® Centrino® Pro processor technology helps strengthen your security measures and reduces the total cost of operating and managing your notebooks with built-in remote manageability, proactive security, and energy-efficient performance.



RELIABILITY...

... with magnesium alloy frame and display enclosure

This strong but lightweight material results in a notebook that can take the knocks of everyday usage while maintaining easy portability.

CORPORATE ELITE

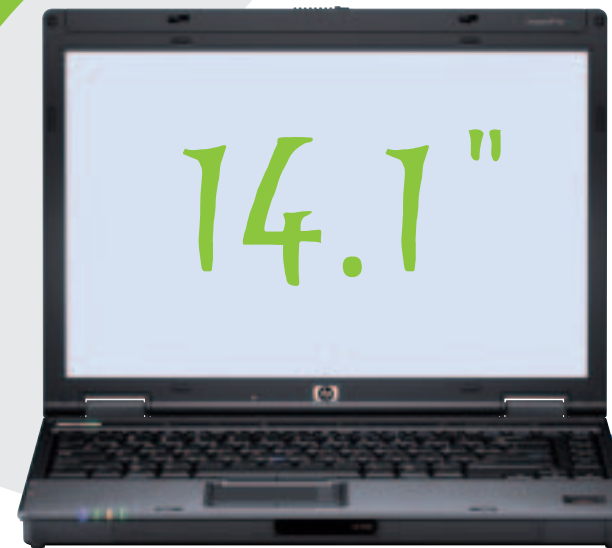
HP Compaq 6910p

Born for success. The ideal solution when you mean serious business – on the road or in the office. Enjoy wireless connectivity with HP 3G Broadband Wireless*, choice of Intel/ATI graphics, plus maximum reliability and security with HP Professional Innovations features.

- ✓ 14.1" widescreen starting at 2 kg
- ✓ Intel® Centrino® Pro

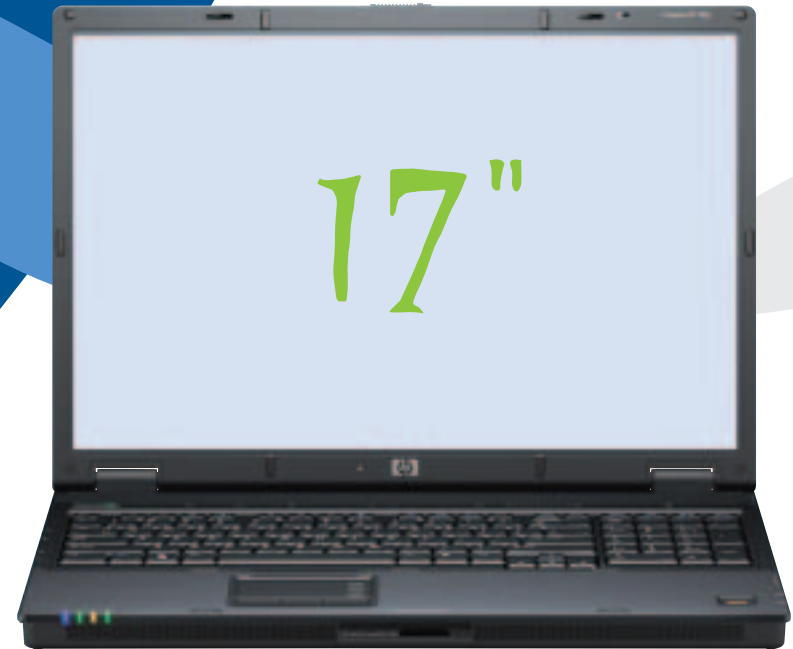


| | |
|---|---------|
| Primary battery life (for Intel UMA) | 5h 45m |
| + HP Extended Life Battery (for Intel UMA) | 11h 15m |
| + HP Ultra-Capacity Battery (for Intel UMA) | 15h 15m |



* Wireless use requires separately purchased service contract. Not all providers are supported and access might be limited to coverage area of service provider. Check with HP representative or service provider for details.

TRULY MANAGEABLE AND POWERFUL



POWER PLUS PORTABILITY

HP Compaq 8510p

Great combination of performance, portability and new features like HDMI, Dual Link DVI support and the optional Blu-Ray Optical Drive support, lets you experience your work in high definition.

- ✓ Intense graphics in a highly mobile design
- ✓ 15.4" widescreen display



| | |
|-----------------------------|---------|
| Primary battery life | 5 hours |
| + HP Extended Life Battery | 9 hours |
| + HP Ultra-Capacity Battery | 11h 45m |

FEEL THE POWER

HP Compaq 8710p

For top performance in the office and beyond, the HP Compaq 8710p Notebook PC offers a 17-inch diagonal widescreen display, elite graphics, and full-sized keyboard with integrated numeric keypad. Think big – work big.

- ✓ NVIDIA graphics
- ✓ 17" widescreen display with choice of WXGA or WSXGA+ anti-glare screens

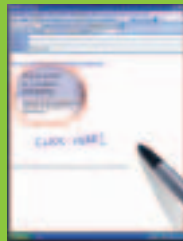


| | |
|-----------------------------|----------|
| Primary battery life | 4h 30m |
| + HP Extended Life Battery | 8 hours |
| + HP Ultra-Capacity Battery | 10 hours |

The **P FEATURE PACKAGE** provides even more innovative features to those included in the Business package for a more durable, fully loaded notebook PC.

Get visual

Give your online presentations and meetings a new look with the 2710p Notebook PC's integrated webcam.



Make the cut

With your Snipping Tool*, use your tablet pen to select a section of a website or other content on your screen, then add handwritten comments and paste it into an e-mail message and share with your colleagues.

* Part of Microsoft® Experience Pack. Free download under microsoft.com/downloads

Stay flexible

With the 2510p and 2710p Notebook PCs you can enjoy outstanding HP 3G Broadband Wireless* functionality.



HP 2710p Ultra-Slim Slice Battery (RX932AA)

HP 2710p Ultra-Slim Expansion Base (GD229AA)

PRODUCTIVITY WITH A TWIST

HP Compaq 2710p

A new way to look at portability. The HP Compaq 2710p Notebook PC is the ideal solution when you're always on the move.

- ✓ 12.1" WXGA LED 160-degree wide viewing angle display
- ✓ Ultra-thin convertible tablet in an innovative design



Primary battery life 5h 30m
 + HP Ultra-Slim Slice Battery 11h 45m

* Wireless use requires separately purchased service contract. Not all providers are supported and access might be limited to coverage area of service provider. Check with HP representative or service provider for details.

HP recommends Windows Vista® Business.

VERSATILE AND PORTABLE



LIGHTEN YOUR WORKLOAD

HP Compaq 2510p**

The ultimate in travel comfort. The HP Compaq 2510p Notebook PC is extremely portable and performance driven, so you'll always stay productive.

- ✓ 12.1" WXGA LED display
- ✓ Smallest and lightest HP Business Notebook PC



HP 9-Cell Battery (EH768AA)
attached to the HP 2510p



| | |
|-------------------|----------|
| HP 3-Cell Battery | 4 hours |
| HP 6-Cell Battery | 8 hours |
| HP 9-Cell Battery | 12 hours |

** HP 2510p accessories: HP 9-Cell Battery (EH768AA); HP 6-Cell Battery (EH767AA); HP 3-Cell Battery (RW556AA); HP Ultra-Light Docking Station (EQ773AA)

With the **W FEATURE PACKAGE** you can receive the desktop-like performance and support you need for your most challenging requirements. And while you're at it, stay mobile.

WHY PURCHASE AN HP MOBILE WORKSTATION?

✓ Power and performance

Users requiring workstation-calibre processing and graphics performance in a mobile form factor will all benefit by being HP mobile workstation users.

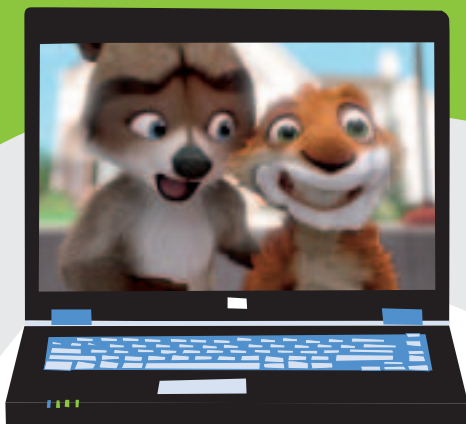
✓ Superior Open GL graphics performance

Graphics that are designed and developed to support professional workstation applications.

✓ Extensive ISV Certifications

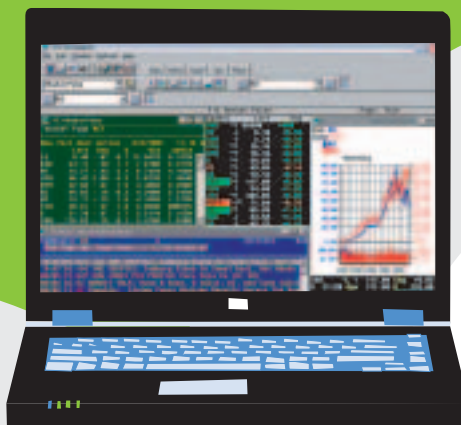
✓ HP Performance Tuning Framework software pre-installed at no extra cost

✓ High-end features



Digital content creation

The power you need to create your lifelike 3D graphics and cutting-edge special effects.



Power

Number crunching has never been so easy, so flexible or so portable.



Computer-aided design

Develop and optimise detailed product designs while staying mobile.

WHERE POWER
IS NATURAL



PORTABLE POWERHOUSE

HP Compaq 8510w Mobile Workstation

Especially on the road. Power, performance and exceptional graphics all wrapped up with choice of NVIDIA or ATI graphics and advanced mobile features. You've never been more empowered.

- ✓ 15.4" widescreen display
- ✓ ISV certifications



| | |
|-----------------------------|---------|
| Primary battery life | 5 hours |
| + HP Extended Life Battery | 9 hours |
| + HP Ultra-Capacity Battery | 11h 45m |

ULTIMATE PERFORMANCE

HP Compaq 8710w Mobile Workstation

Simply the best. As someone who demands exceptional performance with high-end latest and greatest graphics performance from NVIDIA 3D graphics and extensive ISV Certifications, you'll get that and more! All with the convenience of a notebook.

- ✓ 17" widescreen display
- ✓ ISV certifications



| | |
|-----------------------------|---------|
| Primary battery life | 4 hours |
| + HP Extended Life Battery | 7 hours |
| + HP Ultra-Capacity Battery | 9 hours |

STAY PRODUCTIVE – WITH HP ACCESSORIES

Combine industry-leading HP accessories with your notebook PC – watch the results.

**HP Basic (EN48AA),
Advanced Docking Station (EN489AA) or
HP Ultra-Light Docking Station (EQ773AA)***

Enjoy the convenience and efficiency of a docking station for port replication, cable management and more! Now featuring dual-link DVI support** for use with high-resolution monitors like the HP LP3065.

HP Adjustable Notebook Stand (PA508A)

Easily elevate your notebook screen to eye level for ergonomic comfort.

HP Kensington Security Lock (PC766A)

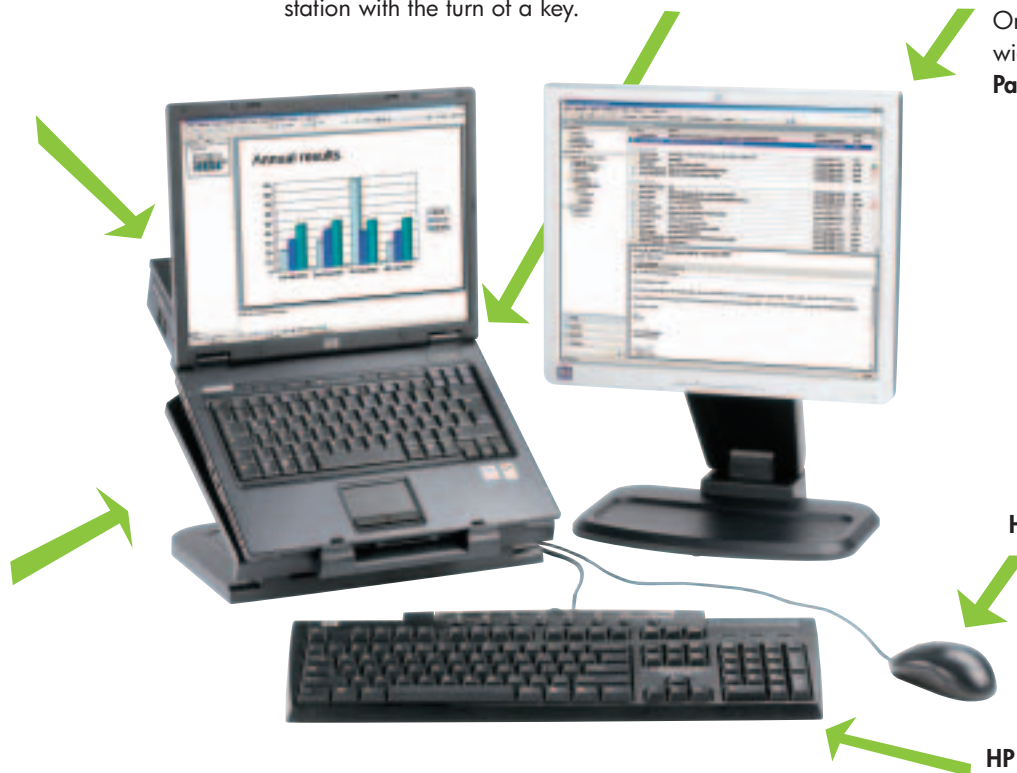
Secure your notebook and docking station with the turn of a key.

HP TFT Monitor

Or go even bigger with the up to 30-inch wide-aspect display of the **LP3065 Flat Panel Monitor**.

HP USB/PS2 Mouse

**HP PS2 (DT527A) or
USB Keyboard (DT528A)**



* HP Ultra-Light Docking Station (EQ773AA) is only compatible with the HP Compaq 2510p

** HP Ultra-Light Docking Station (EQ773AA) does not currently feature dual-link DVI support



Recharge wherever you find a power socket
HP Auto/Air/AC Smart Adapter – 65W (ED993AA)



HP Business Notebook Cases (RR316AA)
Designed with style and safety in mind, and protects your business assets from any rough handling.



Work longer in meetings – double your battery life
HP Extended Life Battery (PB993A)

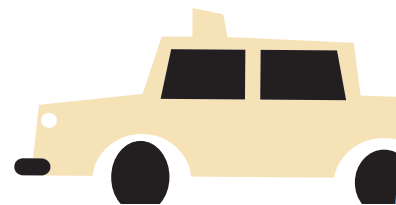


Extra-productive on long trips – up to 15 hours' battery
HP Ultra-Capacity Battery (EJ092AA)

EFFORTLESS PORTABILITY



Mouse works smoothly and accurately – wherever you are
Wireless, credit card-sized HP Bluetooth PC Card Mouse (RJ316AA) stores and charges in the PC Card slot of your notebook.



HP CARE PACK SERVICES

HP Care Pack Services offer a host of pre-defined packaged services to fully complement your HP products. With a range of warranty extensions and upgrades that are affordable and easy to purchase, you can choose exactly the duration, response and service to match your business needs. HP Care Pack Services allow you to concentrate on your business and not on IT Support.

Services include:

- ✓ Next business day onsite
- ✓ Pick-up and return
- ✓ Accidental damage protection
- ✓ Travel coverage

You can enjoy:

- ✓ A choice of flexible HP global service coverage levels (up to 5 years)
- ✓ Reduced downtime and TCO
- ✓ Convenient up-front payment and preset pricing

Please note that some service offers may be limited.
Please check with your local support.

For more information on all warranty extensions and available service levels, visit: hp.com/hps/carepack



HP TOTAL
CARE

HELPING TO PROTECT OUR ENVIRONMENT



DOING OUR BEST FOR A BETTER TOMORROW

HP Business Notebook PCs are designed to minimise their impact on the environment by

- ✓ eliminating or reducing hazardous materials
- ✓ using fewer resources
- ✓ reducing energy consumption
- ✓ designing for recyclability

In our product packaging, we minimise material usage and reduce packaging size/weight to improve transportation fuel efficiency and lower greenhouse emissions.

For further information, please visit:
hp.com/eur/globalcitizenship

HP Delivery and Logistic Services

For direct delivery of HP products, HP sells two levels of logistic services:

Basic services

- ✓ Door/Dock delivery – products are delivered to your door or dock address as specified in the order
- ✓ Inside/Desk delivery – products are delivered to your end-user desk or your IT room

Value-added services

- ✓ In addition, HP proposes an extended logistics portfolio that allows you to get a consolidated shipment of your different products, and also to customise the pallet size; satisfy special equipment requests; have goods delivered during non-standard business days or hours; and have goods unpacked and waste removed.

For more information, contact your local HP representative.

HP Financial Services – the affordable way to invest in IT

HP Financial Services enables you to get the technology you need now, at a price you can afford. Our simple financing solutions help lower ownership costs, reduce risk and secure the best return on your investments. We can finance your entire solution – including hardware, software and services, all with technology-refresh options – so you can focus capital and resources on growing your business.

For more information, visit: hp.com/uk/go/hpfinancialservices

IT Client Management Solutions

HP Client Management Solutions – based on HP Client Manager software and the Altiris product line – are designed to help you optimise your IT infrastructure costs (TCO) and ease deployment of new technology, however heterogeneous your client hardware and operating environment.

For more information, visit: hp.com/go/easydeploy

HP Factory Express Security Solutions

Concerned about losing your valuable hardware and the data it contains? You don't have to be. Help prevent theft of your equipment by up to 90% with HP Factory Express Security Solutions in partnership with the Oxygen StopTrack™ anti-theft system.

Even if anything does go missing, its unique identification number can be used to help trace and return your equipment!

For more information, visit: hp.com/go/factory-express

HP EMEA SALES OFFICES

| | | | |
|---|-------------------|-----------------------|--------------------|
| Albania | +43 125 000 60 22 | Latvia | 800 80 12 |
| Algeria | +213 21 89 10 65 | Lithuania | 8 800 10 000 |
| Austria | +43 800 242 242 | UAE | 800 49 10 |
| Bahrain | 800 00171 | Macedonia | +43 125 000 60 22 |
| Other Gulf Countries (Oman, Qatar, Kuwait, Yemen, Syria, Lebanon, Jordan) | +971 4 881 81 00 | Malta | +43 125 000 60 22 |
| Belgium | +32 78 15 20 30 | Moldova | +43 125 000 60 22 |
| Bosnia-Herzegovina | +43 125 000 60 22 | Morocco | +212 22 43 64 00 |
| Bulgaria | +359 2 969 89 40 | Netherlands | 0800 266 72 72 |
| Croatia | +385 1 606 02 00 | Nigeria | 234 1 2701270 |
| Czech Republic | +420 261 108 108 | Norway | +47 800 37 800 |
| Denmark | +45 70 12 0010 | Poland | +48 22 565 77 00 |
| Egypt | 02 5325222 | Portugal | +351 214 463 556 |
| Estonia | +372 681 38 23 | Romania | +40 21 303 83 03 |
| Finland | +358 10 217 2700 | RSA | 0800 118 883 |
| France | +33 826 800 400 | Russia | +7 495 797 3 797 |
| (€0.15 TTC if you call from France) | | Slovenia | +386 1 230 74 20 |
| Germany (€0.14/Min) Business | +49 1805 665 775 | Slovakia | 0800 147 147 |
| (€0.14/Min) Endcustomer | +49 1805 652 180 | Saudi Arabia | 800 897 14 44 |
| Greece | +30 210 80 91 100 | Serbia and Montenegro | +381 11 201 99 00 |
| Hungary | +36 1 382 11 11 | Spain | +34 902 10 14 14 |
| Ireland | 1850 200 277 | Sweden | +46 200 27 00 00 |
| Israel | +972 9 830 48 48 | Switzerland | +41 848 88 44 66 |
| Italy | +39 039 6615330 | Turkey | +90 212 444 79 79 |
| Kazakhstan and Kyrgyzstan | +7 3272 58 43 43 | United Kingdom | +44 20 79 49 03 00 |
| Kenya | +254 20 2716111 | Ukraine | +380 44 496 96 00 |

SPECIFICATIONS AT A GLANCE

| | 6715s | 6720s | 6820s | 6510b | 6710b | 6715b |
|--|---|--|---|--|--|---|
| Processor & chipset | AMD Turion 64 X2 Dual-Core Mobile™ Technology Processor Mobile™ AMD Sempron Processor AMD M690T | Intel® Core™2 Duo Intel GM965 (800MHz FSB) Intel GL960 (667MHz FSB) | Intel® Core™2 Duo Intel PM965 (800MHz FSB) w/ATI | Intel® Core™2 Duo Intel® Celeron™ M Intel GM965 (800 MHz FSB) | Intel® Core™2 Duo Intel® Celeron™ M Intel GM965 (800 MHz FSB) | AMD Turion 64 X2 Dual-Core Mobile™ Technology Processor Mobile™ AMD Sempron Processor AMD M690T |
| Operating system (certified) | Genuine Windows Vista® Business 32¹ Genuine Windows Vista Business 64¹ Genuine Windows Vista Home Basic Genuine Windows Vista Home Premium Genuine Windows® XP Professional | Genuine Windows Vista Business 32¹ Genuine Windows Vista Home Basic Genuine Windows Vista Home Premium | Genuine Windows Vista Business 32¹ Genuine Windows Vista Home Basic Genuine Windows Vista Home Premium | Genuine Windows Vista Business 32¹ Genuine Windows Vista Business 64¹ Genuine Windows Vista Home Basic Genuine Windows XP Professional | Genuine Windows Vista Business 32¹ Genuine Windows Vista Business 64¹ Genuine Windows Vista Home Basic Genuine Windows XP Professional | Genuine Windows Vista Business 32¹ Genuine Windows Vista Business 64¹ Genuine Windows Vista Home Basic Genuine Windows XP Professional |
| Display² | 15.4" WXGA 15.4" WXGA BrightView | 15.4" WXGA 15.4" WXGA BrightView | 17" WXGA+ 17" WXGA+ BrightView | 14.1" WXGA 14.1" WXGA BrightView 14.1" WXGA+ | 15.4" WXGA 15.4" WSXGA+WVA | 15.4" WXGA 15.4" WSXGA+WVA |
| Hard drive | SATA 9.5 mm up to 160 GB 5400 rpm | SATA 9.5 mm up to 160 GB 5400 rpm | SATA 9.5 mm up to 250 GB 5400 rpm | SATA 9.5 mm 80 GB 7200 rpm up to 160 GB 5400 rpm | SATA 9.5 mm 80 GB 7200 rpm up to 160 GB 5400 rpm | SATA 9.5 mm up to 160 GB 5400 rpm |
| Memory | DDR2 (667 MHz) dual channel – capable up to 4 GB | DDR2 (667 MHz) dual channel – capable up to 4 GB | DDR2 (667 MHz) dual channel – capable up to 4 GB | DDR2 (667 MHz) dual channel – capable up to 4 GB | DDR2 (667 MHz) dual channel – capable up to 4 GB | DDR2 (667 MHz) dual channel – capable up to 4 GB |
| Optical drive³ | Fixed DVD+/-RW DL, DVD+/-RW DL LS | Fixed DVD+/-RW SM DL LS, DVD+/-RW SM DL | Fixed DVD/CD-RW, DVD+/-RW SM DL LS | Fixed DVD, DVD/CD-RW, DVD+/-RW SM DL, DVD+/-RW SM DL LS | Fixed DVD, DVD/CD-RW, DVD+/-RW SM DL, DVD+/-RW SM DL LS | Fixed DVD/CD-RW, DVD+/-RW SM DL, DVD+/-RW SM DL LS |
| Ports | 2 USB 2.0 ports, VGA, stereo microphone in, stereo headphone/line out, power connector, RJ-11, RJ-45 | 3 USB 2.0 ports, VGA, stereo microphone in, stereo headphone/line out, power connector, RJ-11, RJ-45 | 3 USB 2.0 ports, VGA, stereo microphone in, headphone/line out, power connector, RJ-11/modem, RJ-45/Ethernet | 4 USB 2.0 ports, VGA, stereo microphone in, stereo headphone/line out, Firewire (1394a), power connector, RJ-11, RJ-45, S-video TV out | 4 USB 2.0 ports, VGA, stereo microphone in, stereo headphone/line out, Firewire (1394a), power connector, RJ-11, RJ-45, S-video TV out | 4 USB 2.0 ports, VGA, stereo microphone in, stereo headphone/line out, Firewire (1394a), power connector, RJ-11, RJ-45, S-video TV out |
| Docking | No | No | No | HP Basic Docking Station, HP Advanced Docking Station | HP Basic Docking Station, HP Advanced Docking Station | HP Basic Docking Station, HP Advanced Docking Station |
| Graphics | ATI Radeon X1250, up to 512 MB shared system memory | Intel GMA X3100, up to 384 MB | ATI Mobility Radeon X1350 128 MB, up to 384 MB HyperMemory | Intel GMA X3100, up to 384 MB | Intel GMA X3100, up to 384 MB | ATI Radeon X1250, up to 512 MB shared system memory |
| Wireless connectivity | Broadcom 802.11b/g, Broadcom 802.11a/b/g and/or Bluetooth® 2.0 | Intel 802.11a/b/g/draft-n, a/b/g, b/g, Broadcom 802.11a/b/g, b/g and/or Bluetooth 2.0, HP Wireless Assistant | Intel 802.11a/b/g/draft-n, a/b/g, b/g, Broadcom 802.11a/b/g, b/g, Bluetooth 2.0, HP Wireless Assistant | HP 3G Broadband Wireless⁴ (selected models) Intel 802.11a/b/g/draft-n, Intel 802.11a/b/g, Intel 802.11b/g, Broadcom 802.11a/b/g, Broadcom 802.11b/g, Bluetooth 2.0 | HP 3G Broadband Wireless⁴ (selected models) Intel 802.11a/b/g/draft-n, Intel 802.11a/b/g, Intel 802.11b/g, Broadcom 802.11a/b/g, Broadcom 802.11b/g, Bluetooth 2.0 | Broadcom 802.11b/g, Broadcom 802.11a/b/g, Broadcom 802.11a/b/g/draft-n and/or Bluetooth 2.0 |
| Security | HP DriveGuard, Kensington Lock Slot | Kensington Lock Slot | Kensington Lock Slot | TPM 1.2, HP Fingerprint Sensor, Smart Card Reader (replaces PC card slot), HP 3D DriveGuard, Kensington Lock Slot, HP Privacy Filter | TPM 1.2, HP Fingerprint Sensor, Smart Card Reader (replaces PC card slot), HP 3D DriveGuard, Kensington Lock Slot, HP Privacy Filter | TPM 1.2, HP Fingerprint Sensor, Smart Card Reader (replaces PC card slot), HP 3D DriveGuard, Kensington Lock Slot, HP Privacy Filter |
| Battery | 6-cell (47 WHr) | 6-cell (47 WHr) | 6-cell (55 WHr) | 6-cell (55 WHr) or 6-cell (47 WHr) | 6-cell (55 WHr) | 6-cell (55 WHr) |
| Battery life (with HP Extended Life Battery and with HP Ultra-Capacity Battery) | Up to 3h 45m (up to 8h with HP Extended Life Battery, up to 11h 15m with HP Ultra-Capacity Battery) | Up to 4h 30m | Up to 3h | Up to 5h 15m (up to 10h 45m with HP Extended Life Battery, up to 14h 30m with HP Ultra- Capacity Battery) | Up to 5h 15m (up to 10h 45m with HP Extended Life Battery, up to 14h 30m with HP Ultra- Capacity Battery) | Up to 4h 30m (up to 8h 30m with HP Extended Life Battery, up to 12h with HP Ultra-Capacity battery) |
| Warranty | 1 year pick-up and return | 1 year pick-up and return | 1 year pick-up and return | 1 year pick-up and return | 1 year pick-up and return | 1 year pick-up and return |
| Dimension (h x w x d)/ weight | 35 x 357 x 265 mm/ Starting at 2.6 kg | 32.3 x 358 x 266 mm/ Starting at 2.5 kg | 32 x 396 x 285 mm/ Starting at 3 kg | 34 x 331 x 243 mm/ Starting at 2.4 kg | 35 x 357 x 265 mm/ Starting at 2.6 kg | 35 x 357 x 265 mm/ Starting at 2.6 kg |
| HP Care Pack | 3 year Next Business Day Onsite U4386E | 3 year Next Business Day Onsite U4386E | 3 year Next Business Day Onsite U4386E | 3 year Next Business Day Onsite U4386E | 3 year Next Business Day Onsite U4386E | 3 year Next Business Day Onsite U4386E |

| 2510p | 2710p | 6910p | 8510p | 8710p | 8510w | 8710w |
|---|---|---|---|---|--|--|
| Intel® Core™2 Duo – ULV Intel GM965 | Intel® Core™2 Duo – ULV Intel GM965 | Intel® Core™2 Duo Intel PM965 (800 MHz FSB) w/ATI Intel GM965 (800 MHz FSB) w/Intel | Intel® Core™2 Duo Intel PM965 (800 MHz FSB) | Intel® Core™2 Duo Intel PM965 (800 MHz FSB) | Intel® Core™2 Duo Intel PM965 (800 MHz FSB) | Intel® Core™2 Duo Intel PM965 (800 MHz FSB) |
| Genuine Windows Vista Business 32¹ Genuine Windows Vista Business 64¹ Genuine Windows Vista Home Basic Genuine Windows XP Professional | Genuine Windows Vista Business 32¹ Genuine Windows Vista Business 64¹ Genuine Windows XP Tablet PC Edition | Genuine Windows Vista Business 32¹ Genuine Windows Vista Business 64¹ Genuine Windows Vista Home Basic Genuine Windows XP Professional | Genuine Windows Vista Business 32¹ Genuine Windows Vista Business 64¹ Genuine Windows Vista Home Basic Genuine Windows XP Professional | Genuine Windows Vista Business 32¹ Genuine Windows Vista Business 64¹ Genuine Windows Vista Home Basic Genuine Windows Vista Home Premium Genuine Windows XP Professional | Genuine Windows Vista Business 32¹ Genuine Windows Vista Business 64¹ Genuine Windows Vista Home Basic Genuine Windows XP Professional | Genuine Windows Vista Business 32¹ Genuine Windows Vista Business 64¹ Genuine Windows Vista Home Basic Genuine Windows XP Professional |
| 12.1" Illumi-Lite WXGA | 12.1" Illumi-Lite WXGA UWVA with Digitizer, 12.1" Illumi-Lite WXGA UWVA with Digitizer and Outdoor View, 12.1" Illumi-Lite WXGA UWVA with Camera | 14.1" WXGA 14.1" WXGA+ | 15.4" WXGA 15.4" WSXGA+WVA | 17" WXGA+ 17" WSXGA+WVA BrightView | 15.4" WSXGA+ WVA 15.4" WUXGA WVA | 17" WSXGA+ WVA 17" WUXGA+ WVA |
| PATA 1.8" up to 80 GB 4200 rpm | PATA 1.8" up to 80 GB 4200 rpm | SATA 9.5 mm up to 160 GB 7200 rpm up to 160 GB 5400 rpm | SATA 9.5 mm up to 160 GB 7200 rpm up to 160 GB 5400 rpm | SATA 9.5 mm 250 GB 5400 rpm | SATA 9.5 mm 160 GB 7200 rpm 250 GB 5400 rpm | SATA 9.5 mm 160 GB 7200 rpm 250 GB 5400 rpm |
| DDR2 (667 MHz) up to 2 GB (1 DIMM only) | DDR2 (667 MHz) dual channel – capable up to 4 GB | DDR2 (667 MHz) dual channel – capable up to 4 GB | DDR2 (667 MHz) dual channel – capable up to 4 GB | DDR2 (667 MHz) dual channel – capable up to 4 GB | DDR2 (667 MHz) dual channel – capable up to 4 GB | DDR2 (667 MHz) dual channel – capable up to 4 GB |
| Fixed DVD, DVD/CD-RW, DVD+/-RW SM DL or via external MultiBay | Via external MultiBay or Fixed DVD+/- RW SM via expansion base | Modular, MultiBay II DVD, DVD/CD-RW, DVD+/-RW SM DL | Fixed DVD/CD-RW, DVD+/-RW SM DL, DVD+/-RW SM DL LS, Blu-Ray DVD+/-RW DL | Fixed DVD+/-RW DL, DVD+/-RW SM DL LS, Blu-Ray DVD+/-RW DL | Fixed DVD+/-RW DL, DVD+/-RW SM DL LS, Blu-Ray DVD+/-RW DL | Fixed DVD+/-RW DL, DVD+/-RW SM DL LS, Blu-Ray DVD+/-RW DL |
| 2 USB 2.0 ports, VGA, stereo microphone in, stereo headphone/line out, Firewire (1394a), power connector, RJ-11, RJ-45 | 2 USB 2.0 ports, VGA, stereo microphone in, stereo headphone/line out, Firewire (1394a), power connector, RJ-11, RJ-45 | 3 USB 2.0 ports, VGA, stereo microphone in, stereo headphone/line out, Firewire (1394a), power connector, RJ-11, RJ-45, S-video TV out | 4 USB 2.0 ports, VGA, stereo microphone in, stereo headphone/line out, Firewire (1394a), HDMI, power connector, RJ-11, RJ-45 | 6 USB 2.0 ports, VGA, stereo microphone in, stereo headphone/line out, Firewire (1394a), HDMI, power connector, docking connector, RJ-11, RJ-45 | 4 USB 2.0 ports, VGA, stereo microphone in, stereo headphone/line out, Firewire (1394a), HDMI, power connector, docking connector, RJ-11, RJ-45 | 6 USB 2.0 ports, VGA, stereo microphone in, stereo headphone/line out, Firewire (1394a), HDMI, power connector, docking connector, RJ-11, RJ-45 |
| HP 2400/2500 Ultra-Light Docking Station | HP 2700 Ultra-Slim Expansion Base Station | HP Basic Docking Station, HP Advanced Docking Station | HP Basic Docking Station, HP Advanced Docking Station | HP Basic Docking Station, HP Advanced Docking Station | HP Basic Docking Station, HP Advanced Docking Station | HP Basic Docking Station, HP Advanced Docking Station |
| Intel GMA X3100, up to 384 MB | Intel GMA X3100, up to 384 MB | Intel GMA X3100 up to 384 MB ATI Mobility Radeon X2300 64 or 128 MB (256 MB HyperMemory) | ATI Mobility Radeon™ HD X2600 256 MB (512 MB HyperMemory) | NVIDIA Quadro NVS 320M 256 MB (512 MB TurboCache) | NVIDIA Quadro FX 570M 256 MB (512 MB TurboCache), ATI Mobility FireGL V5600 256 MB (512 MB HyperMemory) | NVIDIA Quadro FX 1600M 512 MB |
| HP 3G Broadband Wireless⁴ (optional upgradeable); Intel 802.11a/b/g/ draft-n, a/b/g, b/g, Broadcom 802.11a/b/g, b/g, Bluetooth 2.0, HP Wireless Assistant | HP 3G Broadband Wireless⁴ (optional upgradeable); Intel 802.11a/b/g/ draft-n, a/b/g, b/g, Broadcom 802.11a/b/g, b/g, Bluetooth 2.0, HP Wireless Assistant | HP 3G Broadband Wireless⁴ (optional upgradeable); Intel 802.11a/b/g/ draft-n, a/b/g, b/g, Broadcom 802.11a/b/g, b/g, Bluetooth 2.0, HP Wireless Assistant | Intel 802.11a/b/g/draft-n, a/b/g, b/g, Broadcom 802.11a/b/g, b/g and/or Bluetooth 2.0, HP Wireless Assistant | Intel 802.11a/b/g/draft-n, Intel 802.11a/b/g, Intel 802.11b/g and/or Bluetooth 2.0 | Intel 802.11a/b/g/draft-n, Intel 802.11a/b/g, Intel 802.11b/g and/or Bluetooth 2.0 | Intel 802.11a/b/g/draft-n, Intel 802.11a/b/g, Intel 802.11b/g and/or Bluetooth 2.0 |
| TPM 1.2, HP Fingerprint Sensor, Smart Card Reader (replaces PC card slot), HP 3D DriveGuard, Kensington Lock Slot, HP Privacy Filter | TPM 1.2, HP Fingerprint Sensor, Smart Card Reader (replaces ExpressCard 54 slot), HP 3D DriveGuard, Kensington Lock Slot | TPM 1.2, HP Fingerprint Sensor, Smart Card Reader, HP 3D DriveGuard, Kensington Lock Slot, HP Privacy Filter | TPM 1.2, HP Fingerprint Sensor, Smart Card Reader, HP 3D DriveGuard, Kensington Lock Slot, HP Privacy Filter | TPM 1.2, HP Fingerprint Sensor, Smart Card Reader, HP 3D DriveGuard, Kensington Lock Slot | TPM 1.2, HP Fingerprint Sensor, Smart Card Reader, HP 3D DriveGuard, Kensington Lock Slot, HP Privacy Filter | TPM 1.2, HP Fingerprint Sensor, Smart Card Reader, HP 3D DriveGuard, Kensington Lock Slot |
| 9-cell (83 WHr) or 6-cell (55 WHr) or 3-cell (28 WHr) | 6-cell (44 WHr) | 6-cell (55 WHr) or 4-cell (37 WHr) (Intel only) | 8-cell (73 WHr) | 8-cell (73 WHr) | 8-cell (73 WHr) | 8-cell (73 WHr) |
| From 4h to 12h | Up to 5h 30m (up to 11h 45m with HP Ultra-Slim Battery Slice) | Up to 5h 45m (up to 11h 15m with the HP Extended Life Battery and up to 15h 15m with the HP Ultra-Capacity Battery) (UMA only) | Up to 5h (up to 9h with HP Extended Life Battery, up to 11h 45m with HP Ultra-Capacity Battery) | Up to 4h 30m (up to 8h with HP Extended Life Battery, up to 10h with Ultra-Capacity Battery) | Up to 5h (up to 9h with HP Extended Life Battery, up to 11h 45m with HP Ultra-Capacity Battery) | Up to 4h (up to 7h with HP Extended Life Battery, up to 9h with HP Ultra-Capacity Battery) |
| 3 years pick-up and return | 3 years pick-up and return | 3 years pick-up and return | 3 years pick-up and return | 3 years pick-up and return | 3 years pick-up and return | 3 years pick-up and return |
| 25 x 282 x 213 mm/ Starting at 1.3 kg | 28 x 290 x 212 mm/ Starting at 1.7 kg | 29 x 330 x 240 mm/ Starting at 2 kg | 28 x 357 x 260 mm/ Starting at 2.8 kg | 33 x 393 x 275 mm/ Starting at 3.4 kg | 28 x 357 x 260 mm/ Starting at 2.8 kg | 33 x 393 x 275 mm/ Starting at 3.4 kg |
| 3 year Next Business Day Onsite U4415E | 3 year Next Business Day Onsite U4415E | 3 year Next Business Day Onsite U4415E | 3 year Next Business Day Onsite U4415E | 3 year Next Business Day Onsite U4415E | 3 year Next Business Day Onsite U4415E | 3 year Next Business Day Onsite U4415E |

² Panel descriptions: WVA = wide viewing angle UWVA = ultra wide viewing angle BV = BrightView AG = Anti-Glare

³ Optical Drives: SM = SuperMulti DL = Double-Layer LS = LightScribe (creates a monochrome image. LightScribe media required and sold separately.)

⁴ Wireless use requires separately purchased service contract. Not all providers are supported and access might be limited to coverage area of service provider. Check with HP representative or service provider for details.

For more information about HP Compaq notebooks and related HP solutions, visit: hp.com/eur/notebooks

For comprehensive information on HP's wide range of Professional Innovations, visit: hp.com/go/innovations

© Copyright 2007 Hewlett-Packard Development Company, L.P. The information contained herein is subject to change without notice. The only warranties for HP products and services are set forth in the express warranty statements accompanying such products and services. Nothing herein should be construed as constituting an additional warranty. HP shall not be liable for technical or editorial errors or omissions contained herein. Intel, Celeron and Centrino are trademarks or registered trademarks of Intel Corporation or its subsidiaries in the United States and other countries. Microsoft, Windows and Vista are U.S. registered trademarks of Microsoft Corporation in the United States and/or other countries. AMD, AMD Sempron, AMD Turion and combinations thereof are trademarks of Advanced Micro Devices, Inc. Bluetooth is a trademark owned by its proprietor and used by Hewlett-Packard Company under licence.

4AA1-4047EEE. September 2007

